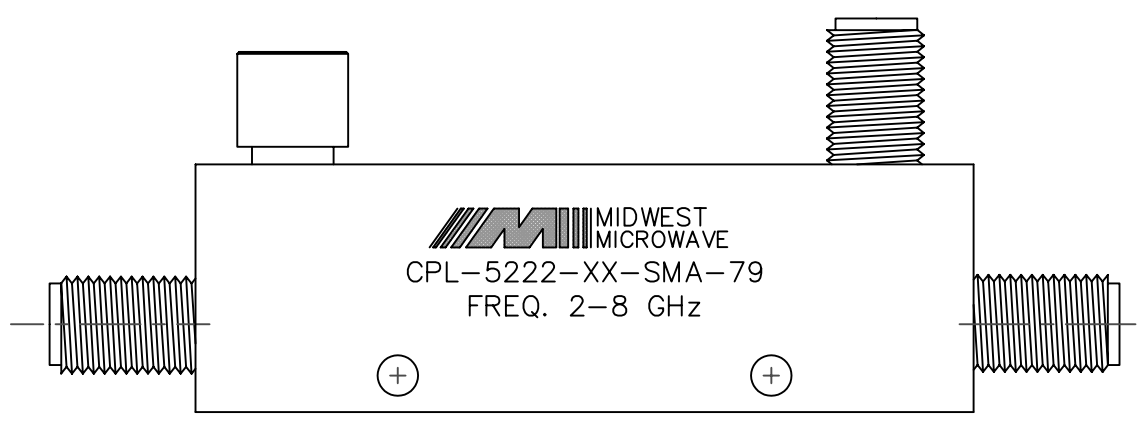
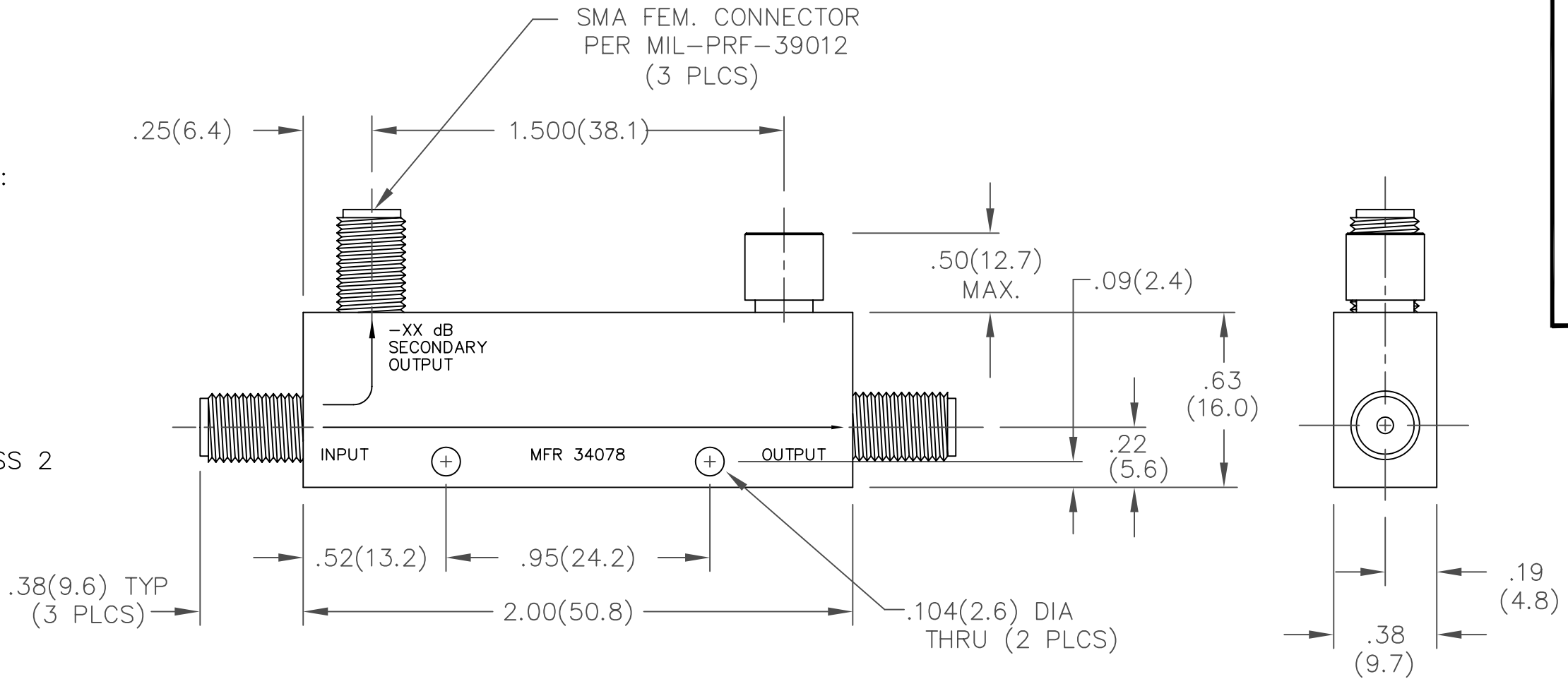


MODEL NUMBER
CPL-5222-06-SMA-79

- NOTES:
- 1.0 ELECTRICAL SPECIFICATIONS:
 - 1.1 FREQUENCY RANGE: 2.0 to 8.0 GHz
 - 1.2 FREQ. SENSITIVITY: ± 0.50 dB
 - 1.3 COUPLING: 6dB ± 1.0 dB.
 - 1.4 VSWR (MAX): 1.25:1
 - 1.5 INSERTION LOSS (EXC. COUPLED POWER): 0.50dB
 - 1.6 DIRECTIVITY: 20dB MIN.
 - 1.7 POWER:
 - AVG.: 50 WATTS
 - PEAK: 3 KILOWATT
 - 1.8 RF IMPEDANCE: 50 OHMS
 - 1.9 WIEGHT: 1.30 Oz (36.9 GRAMS)

- 2.0 FINISHING:
 - 2.1 GREY OVER MIL-E-15090 TYPE II, CLASS 2
OVER MIL-C-5541 CLASS 3A
MEETS MIL-F-14072
MEETS MIL-E-5400 AND MIL-E-16400V.
 - 2.2 MARK UNIT AS SHOWN.
- 3.0 DIMENSIONS IN PARENTHESIS ARE IN MILLIMETERS.



BACKSIDE MARKING

NOTICE: The information contained in this drawing is proprietary and must not be used without the permission of Emerson Network Power.		CAGE CODE 34078		MIDWEST MICROWAVE	
UNLESS OTHERWISE NOTED DIMENSIONS ARE IN INCHES AND TOLERANCES ARE: 3 PLACE DECIMALS ± 0.005 2 PLACE DECIMALS ± 0.02 FRACTIONS $\pm 1/64$ PARALLELITY: T.I.R. _____ FLATNESS: T.I.R. _____ CONCENTRICITY: T.I.R. _____ ANGLES AND PERPENDICULARITY: $\pm 1'$		 EMERSON Network Power Connectivity Solutions		TITLE DIRECTIONAL COUPLER OUTLINE DRAWING	
DRAWN/DATE A.BEATTY 10/23/91		ENG./DATE CATALANO 10/24/91		DRAWING NUMBER CPL-5222-06-SMA-79-01	
CHECKED/DATE A.BEATTY 10/23/91		APPROVED/DATE		REV. F	
SCALE: 2:1				SHEET 1 of 1	

REV.	DESCRIPTION	DATE
-	RELEASED	11/08/10
F	ECO 22354	